

# UPPER BRUSH GUARD KIT



P/N 2890232

## MISSING OR DAMAGED PARTS

Before beginning assembly, inspect the kit and its component(s) to be sure all parts and tools are accounted for and not damaged. If missing parts or parts are damaged, please contact your Selling Dealer for assistance.

If your accessory was purchased online, please contact POLARIS® customer service at **1-800-POLARIS** (US & Canada only).

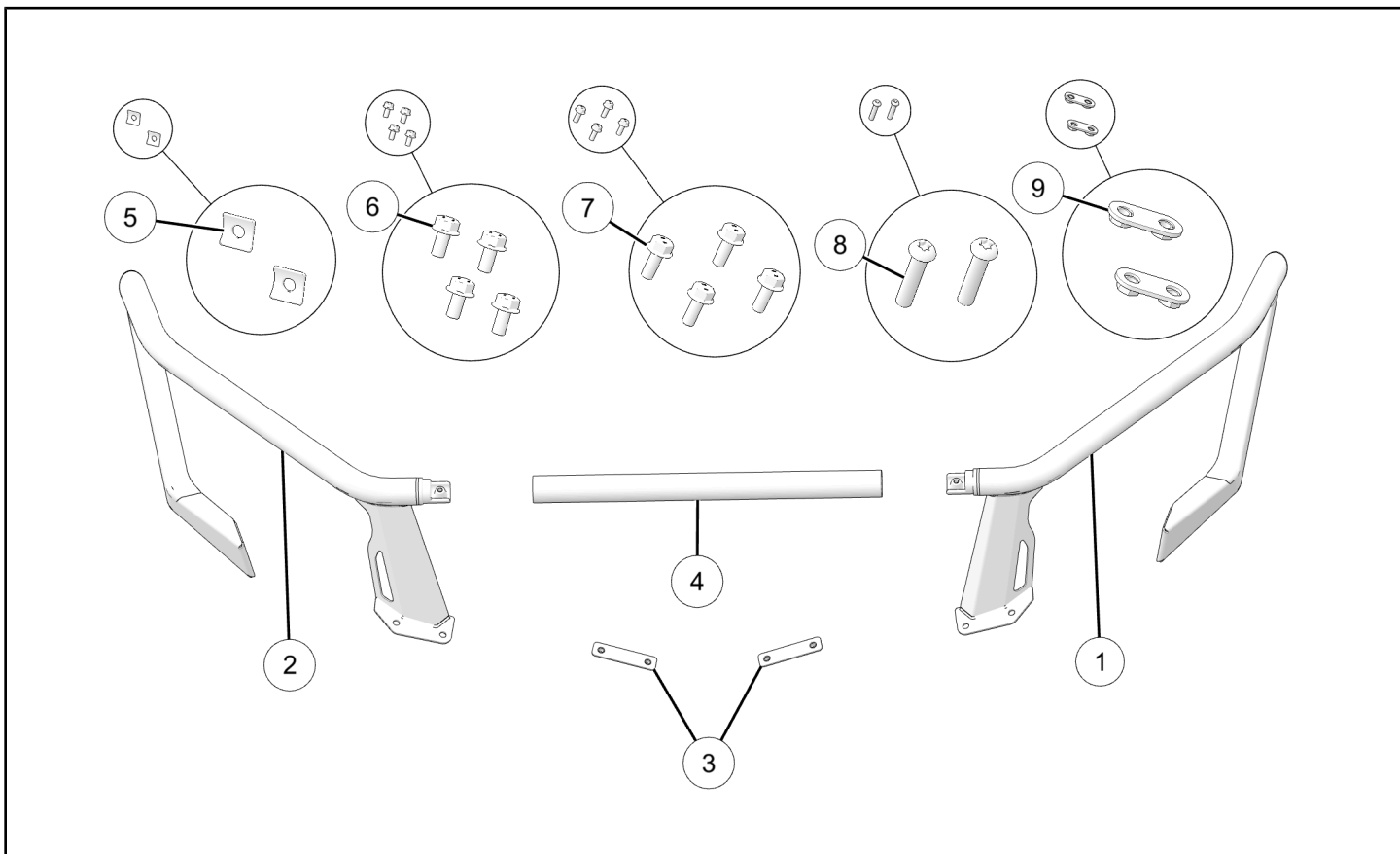
## APPLICATION

Verify accessory fitment at [www.polaris.com](http://www.polaris.com).

### IMPORTANT

This kit is not compatible with *Front Hood Storage Rack*, P/N 2890583

## KIT CONTENTS



REF	QTY	PART DESCRIPTION	P/N AVAILABLE SEPARATELY	SERVICE KIT AVAILABLE
1	1	Upper Brush Guard, Left	n/a	n/a
2	1	Upper Brush Guard, Right	n/a	n/a
3	2	Front Bumper Mount Bracket	n/a	2211954

REF	QTY	PART DESCRIPTION	P/N AVAILABLE SEPARATELY	SERVICE KIT AVAILABLE
4	1	Center Tube	5346179	n/a
5	2	Washer, Hood Rack	n/a	2211954
6	4	Screw, Hex Flange, M8 x 1.25 x 16 mm	7521332-16	2211954
7	4	Screw, Hex Flange, M8 x 1.25 x 20 mm	7521332-20	2211954
8	2	Screw, Torx® Button Head, M8 x 1.25 x 35 mm	7527948-35	2211954
9	2	Nut Plate	n/a	2211954

## TOOLS REQUIRED

- Safety Glasses
- Socket Set, Metric
- Socket Set, Torx® Bit
- Torque Wrench
- Wrench Set, Metric

## IMPORTANT

Your Upper Brush Guard Kit is exclusively designed for your vehicle. Please read the installation instructions thoroughly before beginning. Installation is easier if the vehicle is clean and free of debris. For your safety, and to ensure a satisfactory installation, perform all installation steps correctly in the sequence shown.

## INSTALLATION INSTRUCTIONS

### VEHICLE PREPARATION

#### GENERAL

1. Park vehicle on a flat surface.

2. Shift vehicle into PARK.

3. Turn key to OFF position and remove key.

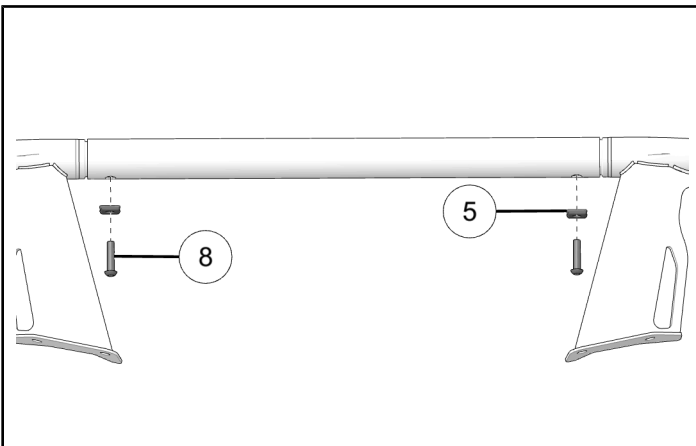
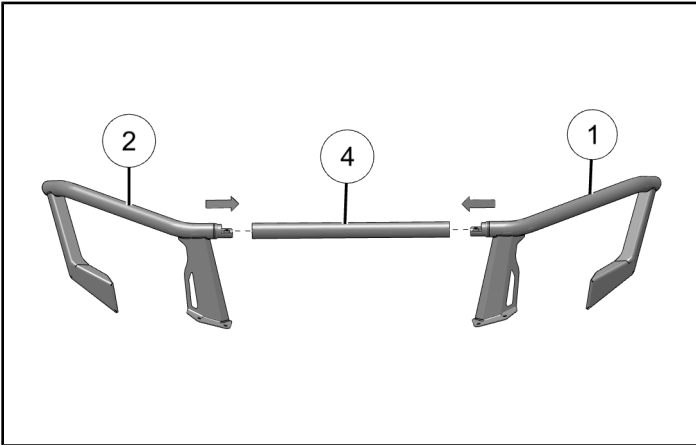
## ACCESSORY INSTALLATION

### TIP

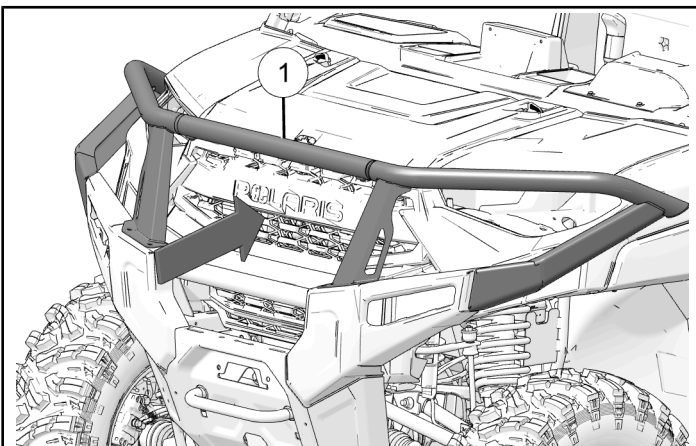
Two people are recommended for the installation of this accessory.

1. Loosely assemble left brush guard ①, right brush guard ②, and center tube ④ using two screws ⑧ and two hood rack washers ⑤.

DO NOT torque fasteners at this time.



2. Align upper brush guard assembly ① on bumper.



3. Loosely attach sides of brush guard with nut plate ⑨ and two screws ⑥.

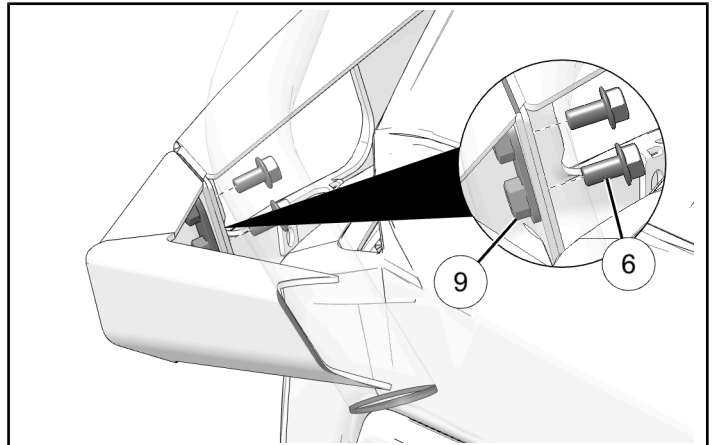
DO NOT torque fasteners at this time.

### NOTICE

Left side shown; right side similar.

### NOTICE

Some parts hidden for clarity.



4. Loosely attach front of brush guard with mounting bracket ③ and two screws ⑦.

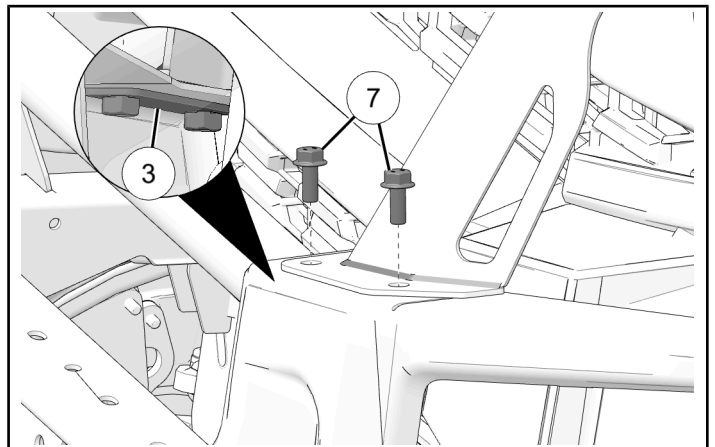
DO NOT torque fasteners at this time.

### NOTICE

Left side shown; right side similar.

### NOTICE

Some parts hidden for clarity.



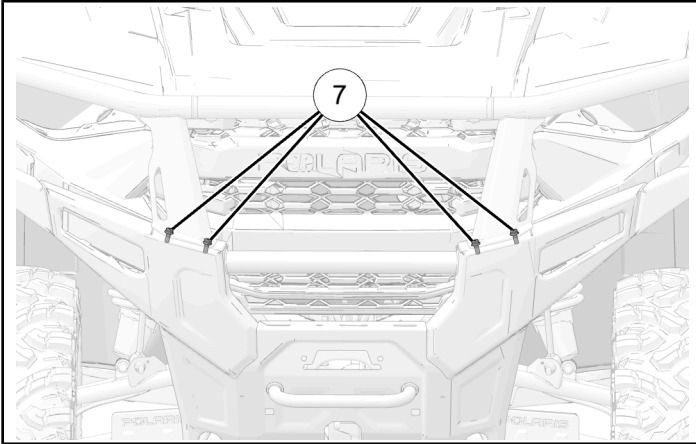
5. Torque four screws ⑦ to specification.

**TORQUE**

Screws ⑦:  
**16 ft-lbs (22 N·m)**

**NOTICE**

Some parts hidden for clarity.



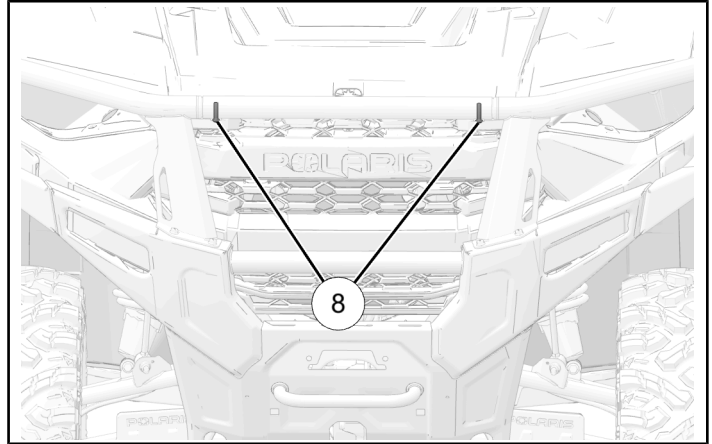
7. Torque two screws ⑧ to specification.

**TORQUE**

Screws ⑧:  
**16 ft-lbs (22 N·m)**

**NOTICE**

Some parts hidden for clarity.



6. Torque four screws ⑥ to specification.

**TORQUE**

Screws ⑥:  
**16 ft-lbs (22 N·m)**

**NOTICE**

Some parts hidden for clarity.

